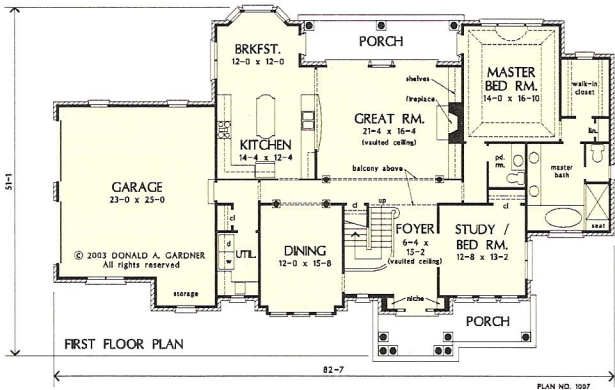
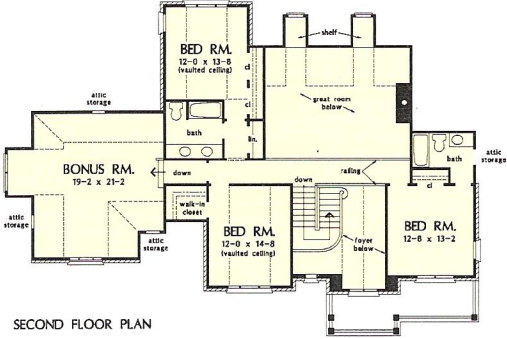


The Ballenger Plan 1007



© 2003 Donald A. Gardner, Inc.



Sophisticated and stately, this Traditional has an abundance of architectural interest and an open, family-efficient floorplan. Columns and an elegant balustrade create a regal entryway, while a box bay window is crowned with a metal roof and accentuated by a Palladian window above it. A hip roof, decorative brickwork and multiple gables add beauty to any streetscape or lot. The foyer features a two-story cathedral ceiling and grand staircase. Interior columns and a balcony separate the great room with its fireplace, French doors and built-in cabinetry. The kitchen is complete with a convenient central island and is open to the breakfast bay.